

Browser Settings

To enable TLS 1.1 and/or TLS 1.2 protocols on your browser(s), see the list below.



[Microsoft Internet Explorer](#)



[Google Chrome](#)



[Mozilla Firefox](#)



[Opera](#)



[Apple Safari](#)

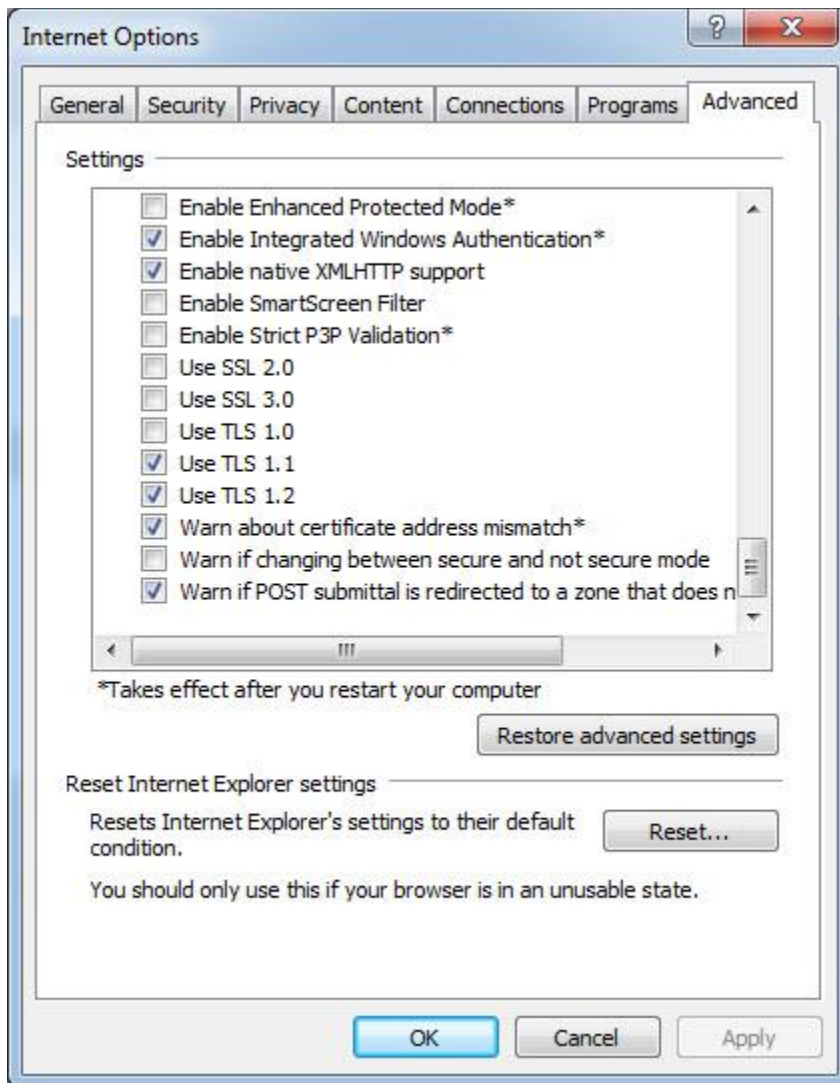


[Microsoft Edge](#)

Microsoft Internet Explorer

NOTE: Internet Explorer 8 does **NOT** support TLS 1.2.

1. Open **Internet Explorer**.
2. From the menu bar, click **Tools>Internet Options>Advanced** tab.
3. Scroll down to the **Security** category, and manually check the option boxes for **Use TLS 1.1** and **Use TLS 1.2**.

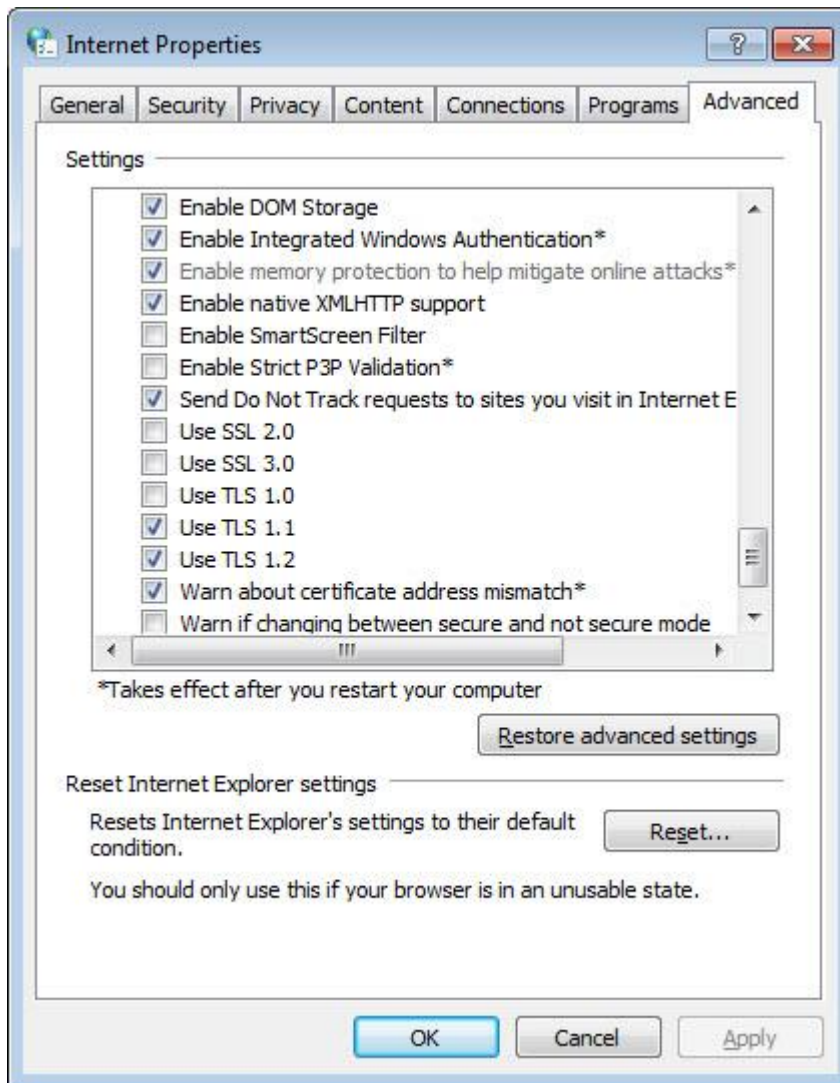


4. Click **OK**.
5. Close your browser, and restart Internet Explorer.



Google Chrome

1. Open **Google Chrome**.
2. Press **Alt + F**, and select **Settings**.
3. Scroll down, and select **Show advanced settings...**
4. Scroll down to the **Network** section, and click on **Change proxy settings...**
5. Select the **Advanced** tab.
6. Scroll down to the **Security** category, and manually check the option boxes for **Use TLS 1.1** and **Use TLS 1.2**



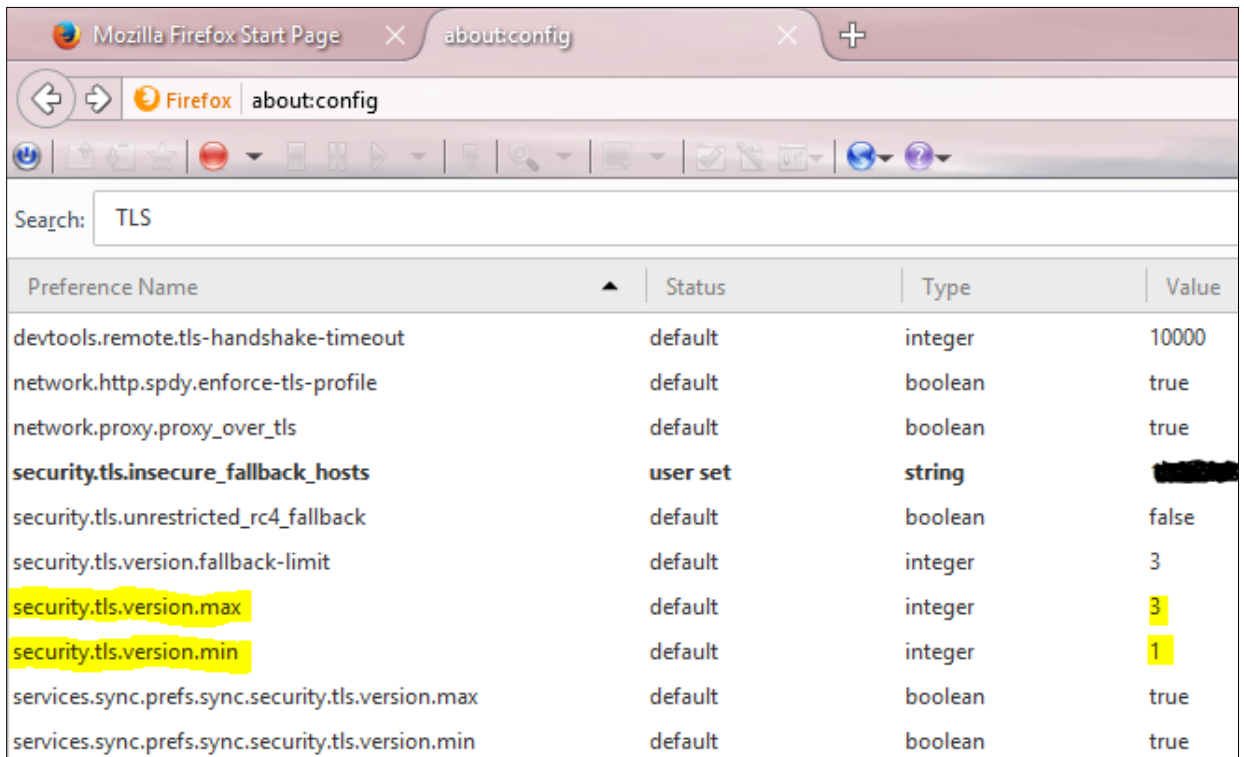
7. Click **OK**.
8. Close your browser, and restart Google Chrome.



Mozilla Firefox

NOTE: Firefox 43 and newer support TLS 1.0, 1.1, and 1.2 by default. You shouldn't need to make any changes, but you can double-check the settings by doing the following:

1. In a new tab, type or paste **about:config** in the address bar, and press **Enter/Return**.
2. In the search box above the list, type or paste **TLS**, and pause while the list is filtered.
3. If the **security.tls.version.max** preference is bolded and "user set" is a value other than 3, right-click>Reset the preference to restore the default value of 3.
4. If the **security.tls.version.min** preference is bolded and "user set" is a value other than 1, right-click>Reset the preference to restore the default value of 1.



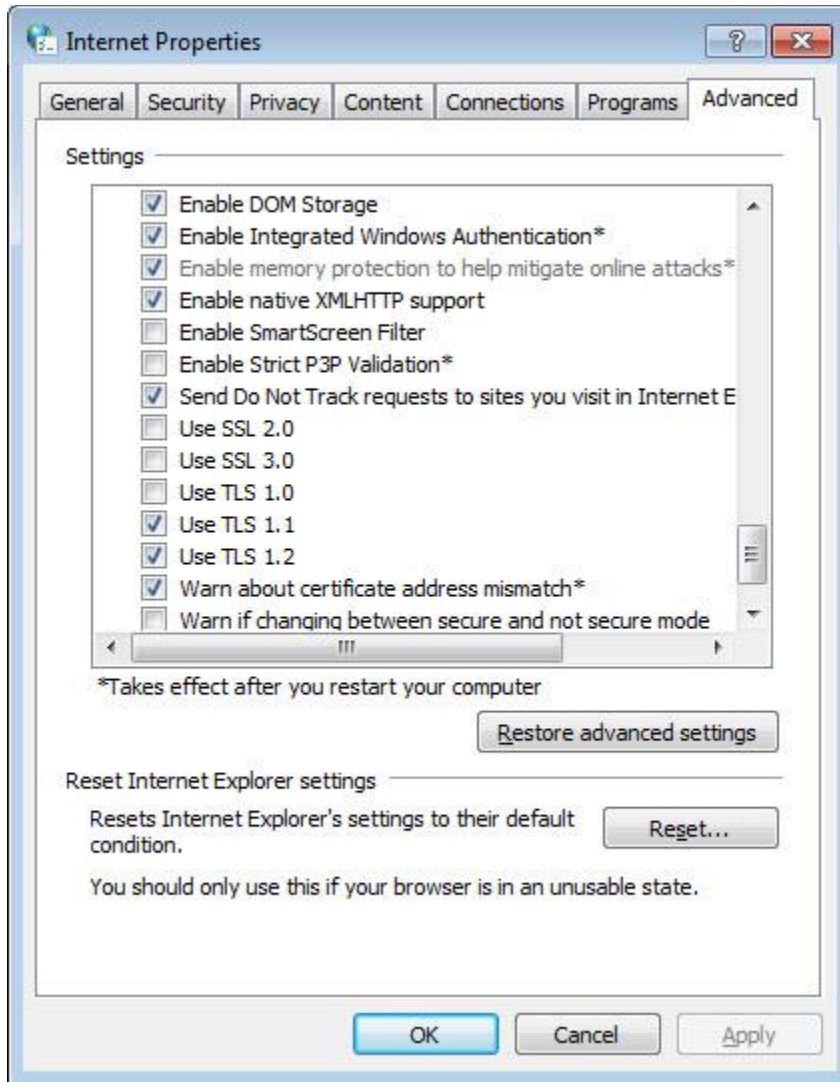
The screenshot shows the Mozilla Firefox browser window with the address bar set to 'about:config'. The search box contains 'TLS'. A table of preferences is displayed below the search box. The table has four columns: Preference Name, Status, Type, and Value. The preferences listed are:

Preference Name	Status	Type	Value
devtools.remote.tls-handshake-timeout	default	integer	10000
network.http.spdy.enforce-tls-profile	default	boolean	true
network.proxy.proxy_over_tls	default	boolean	true
security.tls.insecure_fallback_hosts	user set	string	[REDACTED]
security.tls.unrestricted_rc4_fallback	default	boolean	false
security.tls.version.fallback-limit	default	integer	3
security.tls.version.max	default	integer	3
security.tls.version.min	default	integer	1
services.sync.prefs.sync.security.tls.version.max	default	boolean	true
services.sync.prefs.sync.security.tls.version.min	default	boolean	true

5. Click **OK**.
6. Close your browser, and restart Mozilla Firefox.



1. Open **Opera**.
2. Press **Ctrl + F12**.
3. Scroll down to the **Network** section, and click on **Change proxy settings...**
4. Select the **Advanced** tab.
5. Scroll down to the **Security** category, and manually check the option boxes for **Use TLS 1.1** and **Use TLS 1.2**.



6. Click **OK**.
7. Close your browser, and restart Opera.



Apple Safari

NOTE: There are no options for enabling SSL protocols. If you are using version 7 or greater of Safari, TLS 1.1 and TLS 1.2 are automatically enabled.



Microsoft Edge

NOTE: There are no options for enabling SSL protocols. TLS 1.1 and TLS 1.2 are automatically enabled.